

TERMINAL DATA

Terminal Data of the medium-capacity (17 to 100Ah) battery

| Model No. | Terminal thickness A (1) | Height from battery case top | | Terminal width | Hole diameter | Hole Position | | | Bolt | | | Type of Terminal |
|-----------|-----------------------------|------------------------------|--------|----------------|---------------|------------------------------|------------------------------|---------------------------------------|--------------------|-------|------------------|------------------|
| | | B1 (1) | B2 (2) | | | Distance from top: E1 (1) | Distance from top: E2 (2) | Distance from terminal top: E3 (2) | Diameter F1 (3) | Pitch | Length F2 (3) | |

LC-R Series

| | | | | | | | | | | | | |
|-------------|-----------|-----|------------|----------|-----------|-----|----------|-----------|----|---------|----------|------------------|
| LC-RD1217P | 5.0 ± 0.3 | 1.0 | — | 11 ± 0.4 | 5.5 ± 0.3 | 6.5 | — | 5.5 ± 0.3 | M5 | P = 0.8 | 15 ± 1.0 | M5 bolt and nut |
| LC-RD1217AP | — | 1.7 | — | — | — | — | — | — | M5 | P = 0.8 | 9.8 | M5 threaded post |
| LC-R1233P | 6.0 ± 0.5 | — | 26.5 ± 1.5 | 16 ± 0.8 | 6.5 ± 0.4 | — | 19 ± 1.5 | 7.5 ± 0.4 | M6 | P = 1.0 | 20 ± 1.0 | M6 bolt and nut |

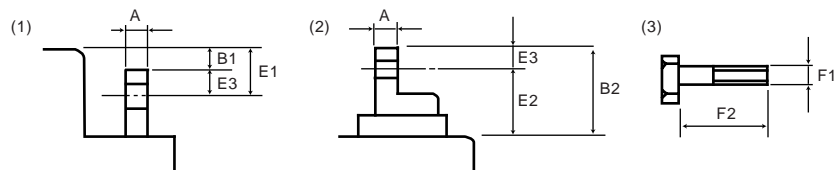
LC-X, P Series

| | | | | | | | | | | | | |
|-------------|-----------|-----------|------------|----------|---------------|---------|----------|-----------|----|----------|-----------|------------------|
| LC-PD1217P | 5.0 ± 0.3 | 1.0 | — | 11 ± 0.4 | 5.5 ± 0.3 | 6.5 | — | 5.5 ± 0.3 | M5 | P = 0.8 | 15 ± 1.0 | M5 bolt and nut |
| LC-X1220P | 5.0 ± 0.3 | 1.0 | — | 11 ± 0.4 | 5.5 ± 0.3 | 6.5 | — | 5.5 ± 0.3 | M5 | P = 0.8 | 15 ± 1.0 | M5 bolt and nut |
| LC-X1220AP | — | 1.7 | — | — | — | — | — | — | M5 | P = 0.8 | 9.8 | M5 threaded post |
| LC-X1224AP | — | 2.2 ± 1.0 | 9.8 ± 1.5 | — | — | — | — | — | M5 | P = 0.8 | 8.3 ± 1.0 | M5 threaded post |
| LC-X1224P | 8.0 ± 0.5 | 4.5 | 16.5 ± 1.5 | 16 ± 0.8 | 6.5 ± 0.4 | — | 9 ± 1.0 | 7.5 ± 0.4 | M5 | P = 0.8 | 15 ± 1.0 | M5 bolt and nut |
| LC-X1228AP | — | 2.2 ± 1.0 | 9.8 ± 1.5 | — | — | — | — | — | M5 | P = 0.8 | 8.3 ± 1.0 | M5 threaded post |
| LC-X1228P | 8.0 ± 0.5 | 4.5 | 16.5 ± 1.5 | 16 ± 0.8 | 6.5 ± 0.4 | — | 9 ± 1.0 | 7.5 ± 0.4 | M5 | P = 0.8 | 15 ± 1.0 | M5 bolt and nut |
| LC-X1238AP | — | 1.7 ± 1.0 | 9.8 ± 1.5 | — | — | — | — | — | M5 | P = 0.8 | 8.3 ± 1.0 | M5 threaded post |
| LC-X1238P | 8.0 ± 0.5 | 5.0 | 16.5 ± 1.5 | 16 ± 0.8 | 6.5 ± 0.4 | — | 9 ± 1.0 | 7.5 ± 0.4 | M6 | P = 1.0 | 20 ± 1.0 | M6 bolt and nut |
| LC-X1242AP | — | 1.7 ± 1.0 | 9.8 ± 1.5 | — | — | — | — | — | M5 | P = 0.8 | 8.3 ± 1.0 | M5 threaded post |
| LC-X1242P | 8.0 ± 0.5 | 5.0 | 16.5 ± 1.5 | 16 ± 0.8 | 6.5 ± 0.4 | — | 9 ± 1.0 | 7.5 ± 0.4 | M6 | P = 1.0 | 20 ± 1.0 | M6 bolt and nut |
| LC-X1265P | 7.0 ± 0.5 | 2.0 ± 1.0 | 18 ± 1.5 | — | 6.5 ± 0.5-0.4 | 9.5 ± 1 | — | 7.5 ± 0.4 | M6 | P = 1.0 | 20 ± 1.0 | M6 bolt and nut |
| LC-XA12100P | 8.0 ± 0.5 | — | 24 ± 1.5 | — | 6.5 ± 0.4 | — | 14 ± 1.0 | 10 ± 0.4 | M8 | P = 1.25 | 20 ± 1.0 | M8 bolt and nut |

LC-XC Series

| | | | | | | | | | | | | |
|-------------|---|-----------|-----------|---|---|---|---|---|----|---------|-----------|------------------|
| LC-XC1228AP | — | 2.2 ± 1.0 | 9.8 ± 1.5 | — | — | — | — | — | M5 | P = 0.8 | 8.3 ± 1.0 | M5 threaded post |
| LC-XC1238AP | — | 1.7 ± 1.0 | 9.8 ± 1.5 | — | — | — | — | — | M5 | P = 0.8 | 8.3 ± 1.0 | M5 threaded post |

Bolt and Nut type (M5, M6, M8)



Notice to readers

The proposition has been launched in California that lead should be known as having bad effect for people's health (proposition 65)

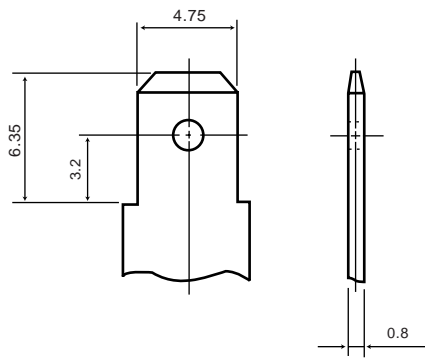
This indicates those batteries listed above due to the uncovered terminals made of lead.

When VRLAs are sold in California, it is necessary to put recommended label and material safety data sheet (MSDS) of every lot.

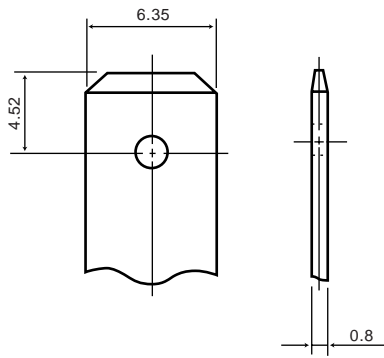
When selling the equipment, make sure to check the suffix of their model numbers and use the batteries destined for U.S.A.

Please see our web site (http://industrial.panasonic.com/ww/products_e/battery_e/battery_e.html) for getting PSDS(English only).

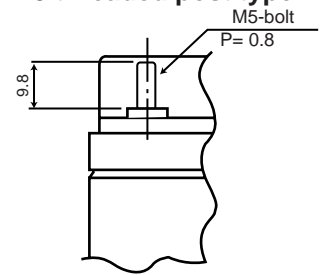
Faston tab type 187



Faston tab type 250



M5 threaded post type



EXAMPLES OF BATTERY LABELS

The following label examples are for reference only. Label content may vary with country of manufacture and/or destination country. Please consult your local Panasonic sales office for label information on specific model numbers.

Sample of Rechargeable Sealed Lead-Acid Battery Label

Panasonic®

Valve Regulated Lead-Acid Battery

Mode No. **LC-R127R2P** (12V, 7.2Ah/20HR)

Constant Voltage Charge

Voltage regulation

Cycle use :14.5V ~14.9V (25°C)

(Initial current:less than 2.88A)

Standby use: 13.6V ~13.8V (25°C)

NONSPILLABLE

IN THE U. S. A. CALL 1-800-SAV-LEAD

BATTERY MUST BE RECYCLED.

CAUTION

- * Do not charge in a gas tight container.
- * Do not short the battery terminals.
- * Do not incinerate.
- * Flush with water at once if contact is made with electrolyte(Acid).



Manufactured for Matsushita Battery Industrial Co., Ltd. Osaka Japan

Made in China